



WE SERVICE & REPAIR ALL  
INDUSTRIAL ELECTRONICS, MOTORS,  
HYDRAULICS & PNEUMATICS

Your #1 Source  
for Industrial  
Repairs & Surplus



1.877.249.1701



[www.gesrepair.com](http://www.gesrepair.com)

# Why Choose Us?



## Customer Service

At Global Electronic Services, we believe in exceptional customer service. Our customer's needs are our utmost priority and responsibility. We go above and beyond our customer's expectations. Our phones are always monitored

by live personnel. Our trained staff have the expertise to handle any question or concern you may have.

## Customer Resources

Global Electronic Services provides the most cutting edge resources to help make the repair process easy...

### World Class Website & Customer Portal

- Customer Portal allows you to generate an RMA, approve orders, check repair status, make payments and review your entire order history
- The most complete repair pricing database
- Search our refurbished and surplus database with pricing and availability, over 5 million units available by part number, ready for delivery
- Detailed repair processes
- Get a quote or ask a question online
- Online Chat

visit [gesrepair.com](http://gesrepair.com)  
to view our video:  
**Why Choose Global**



### Social

- Go to [www.gesrepair.com](http://www.gesrepair.com) and click on the links to
  - follow us on Twitter and LinkedIn
  - like us on Facebook
  - subscribe to our YouTube Channel & our Blog



1.877.249.1701



[www.gesrepair.com](http://www.gesrepair.com)



[sales@gesrepair.com](mailto:sales@gesrepair.com)



# The Global Advantage

- ✓ 18 Month In-Service Warranty
- ✓ 1-5 Day Standard Turnaround
- ✓ FREE 1-2 Day Rush Service
- ✓ Free Evaluations on All Items
- ✓ The Global Price Guarantee - We'll Beat Any Competitor's Repair Price by a Minimum of 10%
- ✓ 24/7 Live Customer Support
- ✓ OEM Trained & Certified Technicians
- ✓ Industry Leading Test Equipment
- ✓ Failure & Testing Analysis
- ✓ Diverse Inventory of Common Failure Components
- ✓ Online Repair Status, Tracking & Management
- ✓ Most Complete Repair Pricing Online



## Locations



5325 Palmero Court  
 Buford, GA 30518  
 770.965.9294 | fax 770.965.1314

Free pick up & delivery in:  
 GA | AL | KY | NC | SC | TN



1010 Pamela Drive  
 Euless, TX 76040  
 817.545.2911 | fax 817.545.2991

Free pick up & delivery in:  
 TX | AR | KS | LA | NM | OK



# We Service All Industrial Electronics, Motors, Hydraulics & Pneumatics



AC & DC Drives  
AC & DC Motors  
Amplifiers  
Chart Recorders  
Circuit Breakers  
CNC Controls  
Contactors  
Counters & Timers  
Encoders  
Flow Meters  
Hydraulics  
Industrial Controls  
Industrial Monitors  
Inverters  
I/O Modules  
Monitors  
Motor Controllers  
Motors  
Photo Electronics

Operator Interfaces  
PLC Modules  
Power Supplies  
Pressure Controls  
Printed Circuit Boards

Relays  
Robotics  
Safety Equipment  
Sensors  
Servo Drives



Process Controls  
Pneumatics  
Programmable Logic Controllers  
Push Buttons  
Pumps

Servo Motors  
Switches  
Temperature Controllers  
Test Equipment  
Timers  
Touchscreens  
Transducers  
Transformers  
Ultrasonics  
Uninterruptible Power Supplies  
Valves  
Vector Drives  
and much more!



1.877.249.1701

[www.gesrepair.com](http://www.gesrepair.com)

[sales@gesrepair.com](mailto:sales@gesrepair.com)

# Make Us Your Single Source Solution

## Understanding Downtime

Let us show you how Global has lowered cost and reduced downtime for manufacturers around the world!



## The Advantages are Clear

- Single source for repair, service & surplus needs; one stop shop convenience
- Considerable cost savings over alternatives, price guaranteed
- Extensive test equipment, OEM trained & certified technicians
- Broad inventory of common failure components
- Live support 24 hours / 7 days a week
- Alternative solution offered if unit is deemed unrepairable
- 18 month in-service warranty
- 1-5 day standard turnaround
- FREE rush service
- On-site emergency repair/service available
- Large inventory of new and refurbished units



# Your Online Source [www.gesrepair.com](http://www.gesrepair.com)



## Available 24/7/365 Customer Portal

### View Your Account Online!

[www.gesrepair.com](http://www.gesrepair.com)



- Generate an RMA #
- Approve orders
- Check the status of your repair
- Make payments
- Get repair quotes 24/7/365
- Review your entire order history

Find service and parts information faster with our user friendly website. Our extensive relationships with manufacturers, wholesalers and distributors allow us access to thousands of manufacturer inventories, ensuring best price and the fastest turnaround.



- New Units
- Repaired & Refurbished Units
- Surplus Solutions

## On-Site Consulting Services

Global Electronic Services plant management strategy solutions have proven to reduce costs while streamlining process and plant performance. Let us help you improve production and increase uptime.

- On-Site Assessment
- Purchase Analysis
- Outsourced Maintenance
- Performance & Reliability Management
- Asset Management



Working with your operations on-site allows us to deliver service that specifically targets problems and mission-critical parts, allowing us to minimize downtime and prevent potential failures.



1.877.249.1701

[www.gesrepair.com](http://www.gesrepair.com)

[sales@gesrepair.com](mailto:sales@gesrepair.com)

# 1-855-NITE FIX

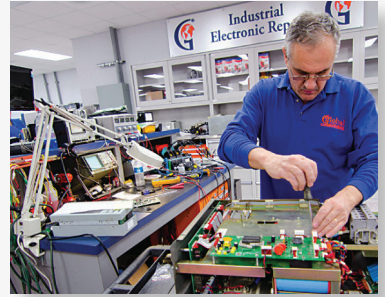
## Emergency Service • 24/7/365



Facing downtime? Call Global Electronic Services! Our emergency repair line is staffed 24 hours a day, 365 days a year by our highly trained representatives.

### Call us 24/7/365

- After Hours Rush Repairs
- Trouble Shooting Help
- Access to our Vast Inventory of Surplus
- The Most Reasonable Rates in the Quickest Time Possible



## Repair Process

PHASE  
**01**

- Received repair logged into system
- Uniquely barcoded
- Tech evaluation completed
- Needed repair parts list produced
- Within 24 hours - customer quote created
- Submitted for customer approval by email and phone call



PHASE  
**02**

- Approval received from customer
- Technician assigned to unit
- Unit assembled for repair
- Component level troubleshooting and assessment looks for electronic signatures to determine functionality levels and performance.



PHASE  
**03**

- True load testing and simulation stations determine faulty conditions and failure
- Repair is completed
- Additional testing under load conditions ensures peak performance
- Repair sent to cleaning station and then to Quality Assurance



PHASE  
**04**

- Suitable cleaners for electronics, degreasing and oil traces are used for a thorough cleaning
- If appropriate, the repair moves to a moisture drying room
- All repairs are prepared to be in a ready state for immediate installation upon customer receipt



PHASE  
**05**

- Final pre-ship QA is done by QA personnel
- The repair is prepped for packing
- Packaging determinations, or custom packaging, are made to ensure safe travel based on size, shape and weight of the repair
- The repair is invoiced after shipment and available to view in full detail in the online Secure Customer Portal



1.877.249.1701



[www.gesrepair.com](http://www.gesrepair.com)



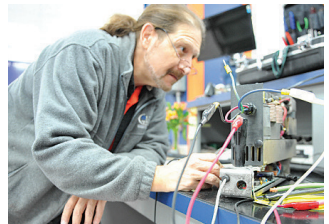
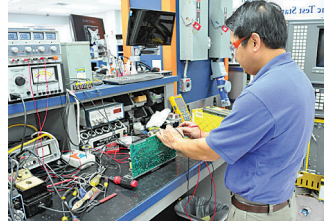
[quotes@gesrepair.com](mailto:quotes@gesrepair.com)



# Industry-Leading Test Equipment OEM Trained & Certified Technicians

## Highly Trained, Certified & Experienced Technicians

- OEM trained and certified
- On-going education
- Generations of experience
- Latest advancement in test procedures and best practices
- Warranty on all our repairs



## Custom Engineered Test Stands



- We build Engineered Test Stands to closely simulate the conditions in the repaired unit's natural environment
- 100% TRUE Load Testing
- Dynamometers – provide full resistance testing to identify weak or faulty components on motors and drives
- Servo Test Stands – provide precise testing for servo drives, amplifiers, motors and feedback devices
- Curve Tracer Signature Devices – analyze and detect problems with circuit boards

visit [gesrepair.com](http://gesrepair.com)  
to view our video:  
**Custom Engineered  
Test Stands**



PLUS – Various PLC Racks, Function Generators, Precision Volt Meters, Load Banks, Test Sets, Analog and Digital Oscilloscopes, Numerous Servo Motors & Cables, Various AC & DC Motors, Galvanometers, Megohmmeters, Megohmmeters, Huntrons, Capacitor Checkers, Monitor Testers, Tachometers, EPROM Burners, Chip Checkers & more!



1.877.249.1701



[www.gesrepair.com](http://www.gesrepair.com)



[sales@gesrepair.com](mailto:sales@gesrepair.com)



# AC & DC Motor Repair

Global Electronic Services offers the broadest range of AC & DC motor repair capabilities available in the industry. All motors undergo an extensive evaluation prior to any work beginning. All worn, damaged, or out of specification parts are replaced during the rebuild process.



visit [gesrepair.com](http://gesrepair.com)  
to view our video:  
**AC & DC Motor Repair**

**Rewinding** - As one of the few repair companies that offers in-house rewinding services, Global has perfected the process of rewinding AC & DC motors to ensure an exceptional repair:

- Windings are carefully stripped while maintaining the strength and structure of the core
- Coils are rewound to maintain regularity and accuracy
- Copper winding with high H class insulation is used
- Windings are then tested electronically to OEM specifications
- Stators and armatures are dipped to finalize the rewind process



**Dynamic Balancing** - Our highly skilled technicians perform dynamic balancing to reduce vibration and to make sure your motor runs at peak performance. Full balance reports available upon request.



1.877.249.1701



[www.gesrepair.com](http://www.gesrepair.com)



[quotes@gesrepair.com](mailto:quotes@gesrepair.com)



# Servo Motor Repair

Global Electronic Services offers comprehensive repair and maintenance on today's most advanced servo motors. Through our computerized repair procedures and OEM trained servo technicians, we can diagnose, repair, maintenance and re-align your servo motors.



During the repair process, wave form diagnostics are used, as well as test equipment, to ensure your servo motor is functioning within factory specifications. Each servo motor goes through a step by step repair process.

- Visual Inspection
- Rotate shaft and meg the motor
- Check alignment and feedback with Mitchell Electronics testing system
- Perform KE test, to check function of feedback: resolver angles, encoder count and tach voltages
- Servo motor is disassembled, cleaned and baked
- Perform surge and hipot test
- Perform any necessary machine work
- Installation of new bearings and seals
- Repaired motor is reassembled and bench tested
- Paint station
- Quality control checked
- Shipped

visit [gesrepair.com](http://gesrepair.com) to view our video:  
**Servo Motor Testing Procedures**



1.877.249.1701



[www.gesrepair.com](http://www.gesrepair.com)



[sales@gesrepair.com](mailto:sales@gesrepair.com)

# Industrial Electronic Repair

The ever changing world of Industrial Electronics can provide constant obstacles in manufacturing facilities of all sizes and volume levels. That is why you need a partner you can trust! Whether it be component level failure to firmware corruption, Global Electronic Services is here to help. We are a trusted partner to manufacturers and distributors all over the world, as well as an authorized service center to many OEMs.



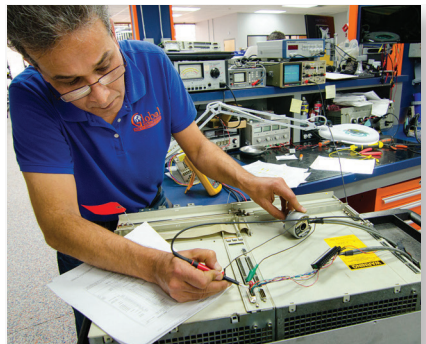
Because we refurbish and repair your entire electronic unit, not just the area of original failure, you have the confidence of knowing that your ENTIRE unit is covered with our industry leading 18 month in-service warranty.

visit [gesrepair.com](http://gesrepair.com)  
to view our video:  
**Some Industrial  
Electronics We Repair**



With our state-of-the-art test equipment and computerized repair process, all repairs are evaluated, repaired to OEM specifications by trained and certified technicians and tested using leading-edge technology to ensure your unit is returned to you in superior condition.

- 100% true load testing
- Dynamometers
- Custom Engineered Test Stands
- OEM test stands
- Servo test stands
- Curve tracer signature devices
- Simulation stations



1.877.249.1701



[www.gesrepair.com](http://www.gesrepair.com)



[quotes@gesrepair.com](mailto:quotes@gesrepair.com)



# Hydraulic & Pneumatic Repair



Global Electronic Services repairs and services all manufacturers of:

- Valves
- Servo Valves
- Pumps
- Cylinders
- Gearboxes
- Actuators

No matter what failure your hydraulics or pneumatics encounter, our OEM trained and certified technicians can handle the repair.

- Disassembled
- Cleaned and inspected
- On-board electronics are fully tested and repaired
- Fittings are checked for tolerance
- All contact points are resurfaced
- Bearings, seals and o-rings are always replaced

visit [gesrepair.com](http://gesrepair.com)  
to view our video:  
**Hydraulic, Pneumatic,  
Valve & Cylinder Repair**



All hydraulics and pneumatics undergo extensive testing after repair so that your equipment will be working efficiently for years to come.

- Pressure tolerance
- Standard specification checks up to 10,000 psi
- Flow testing for each unit's specific flow rate



1.877.249.1701

[www.gesrepair.com](http://www.gesrepair.com)

[sales@gesrepair.com](mailto:sales@gesrepair.com)

# In-House Facilities

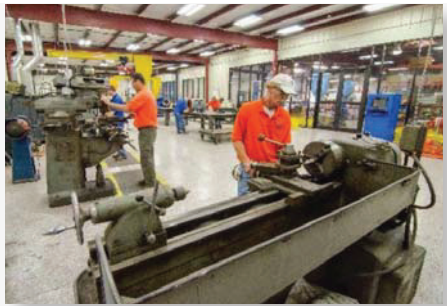
Our in-house facilities are second to none. All of our services are TRULY done in our facility.

Whether we are repairing and replacing components, or machining and fabricating parts, Global Electronic Services provides the most effective repair service in the industry. When it is essential that your industrial equipment is repaired, accurately and on time, contact the experts at Global Electronic Services. Since we have it all under our roof, we can completely control quality and turnaround.

## Balancing Services



## Machine Shop



## Paint Station



## Media Blaster



## Dip Tank

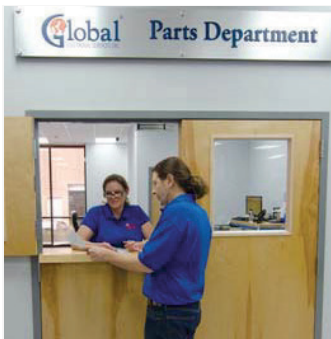


## Heated Pressure Washer



# Surplus

## Millions of Parts at Your Fingertips



Global Electronic Services stocks millions of units and parts in our facilities. We supply new and refurbished parts and equipment to facilities all over the world. Our service is fast and professional and our surplus is ready for delivery.



- Stock common failure components
- Complete units
- Refurbished units
- Hard to find parts
- Obsolete parts and equipment

Check out our extensive surplus collection on our website or contact us so we can provide you with the solution you need.

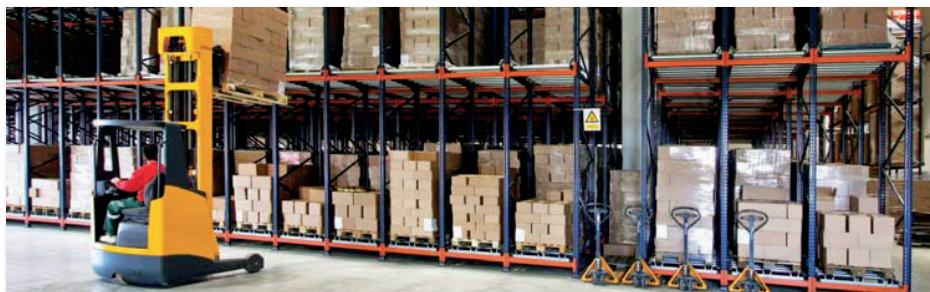


## Search Our Vast Surplus Inventory

[www.gesrepair.com](http://www.gesrepair.com)

Call: 24 Hours / 7 Days a Week

1-877-249-1701



1.877.249.1701



[www.gesrepair.com](http://www.gesrepair.com)



[sales@gesrepair.com](mailto:sales@gesrepair.com)

# What do our customers say?

“Finding GES has been truly amazing!! I was using one of their competitors and too many items kept coming back that were unrepairable (or so I was told by them) after finding GES, I haven’t had a single item that could not be repaired successfully by their highly skilled technicians.

The customer service department has always gone above and beyond for me, it is one of the many reasons that I tell absolutely everyone about how wonderful it is working with Global for all of my repair needs.”

-David, MI Windows and Doors

“For the pass seven plus years we have been dealing with Global Electric Services. We have been sending all of our frequency drives and motors for service and repair and haven’t had any problem with their work. The repairs are done in a very short period and their customer service members are very knowledgeable and outstanding. They currently repair all my equipment.”

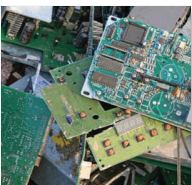
-Kal, Ducan Galvanizing

## Making the Earth a Better Place



Do you have scrap units that you need to get rid of? We can help! Contact us today and we’ll let you know when we can pick up your scrap units.

At Global Electronic Services, we believe in doing our part to help limit industrial waste for generations to come. Never be concerned if you are compliant or not. Let Global Electronic Services handle your electronic recycling needs.



Have you ever wondered what happens to failed industrial electronics once they have been discarded? The metals and materials do not decompose and litter landfills for centuries to come.



With Global’s recycling solution, almost all failed industrial electronics are recycled. Whether certain units are reused to power manufacturing facilities around the world, or components are melted down and used for playground equipment or metal for new containers, you can rest assured we are doing our part to help conserve our planet for generations to come.



# Shipping & Receiving

Global Electronic Services has customers located throughout the world and we are ready to receive and ship your packages. All units are packaged with the highest level of care to surpass OEM requirements. All boxes are packed to exceed all carrier standards.



Whether the shipment is domestic or international, we make sure it arrives in perfect condition. Our dedication to customer service doesn't end with the repair. Our shipping department will also make sure your item is back in your hands in a safe and timely manner.



1.877.249.1701

[www.gesrepair.com](http://www.gesrepair.com)

[sales@gesrepair.com](mailto:sales@gesrepair.com)



# We Service & Repair All Manufacturers & Models

|                       |                         |                    |                        |                       |                       |
|-----------------------|-------------------------|--------------------|------------------------|-----------------------|-----------------------|
| <b>A</b>              | ANDALE                  | B BUNCH            | CASADEI MACHINE        | COUGAR                | DISPLAY TECHNOLOGIES  |
| A-DEC                 | ANDERSON                | BECK               | CCI                    | COUTANT               | DISPLAYTEK            |
| A.C. HAMILTON         | ANDOVER CONTROLS        | BECKMAN            | CC INC.                | COYOTE                | DIXSON                |
| A.C.S.                | ANDROCIOS ENGINEERING   | BEEDE              | CDS                    | CP BOURG              | DME                   |
| A.E.C.L.              | ANECTRON                | BEEL CONTROLS      | CEC                    | CP MFG.               | DODGE                 |
| A.E.S.                | ANSTROM                 | BEHA               | CECIL                  | CPC MICROFLOC         | DOERAN                |
| A.G.V.                | ANSALDO                 | BEI                | CECO                   | CREATIVE TECHNOLOGIES | DOLAN JENNER          |
| A.I.C.                | ANTHEM                  | BELJER ELECTRONICS | CEGELEC CONTROLS       | CREONICS              | DOLOY                 |
| A.I.S.                | ANYSPEED                | BEKUM              | CEI                    | CREST ULTRASONICS     | DOMINO PRINTING       |
| A.M.I.                | APC                     | BELCO              | CE INVALCO             | CRITTENDEN            | DORAN SCALES          |
| A.M. LOCK             | API                     | BELL & HOWELL      | CELIO                  | CRO                   | DORIC                 |
| A.M.S.                | APOLLO                  | BENDIX             | CENTENNIAL             | CROMPTON INSTRUMENTS  | DOTRONIX              |
| A.O. SMITH            | APPALACHIAN             | BENSHAW            | CENTRALP               | CROSS ELECTRONICS     | DOVER DOOR            |
| A.P.M.                | APPLE                   | BENTLY NEVADA      | CENTURY                | CROSSFIELD ELECTRONIC | DOVER FLEXIO          |
| A.S.R. SERVOTRON      | APPLICATION ENGINEERING | BENTRON            | CERBERUS PYROTRONICS   | CROUSE-HINDS          | DRANETZ               |
| A&D COMPANY           | APPLIED AUTOMATION      | BERGANDI           | CERONIX                | CROWN                 | DREFF                 |
| ASMI                  | APPLIED MOTION          | BERGER LAHR        | CERTAINTEED            | CRYDOM                | DREXELBROOK           |
| ABB                   | APS                     | BERTHOLD           | CERUTTI                | CRYOVAC               | DRIVE CONTROL SYSTEMS |
| AB CHANCE             | ARBURG                  | BERTRAN            | CG SYSTEMS             | CSI                   | DRUCK                 |
| AB DICK               | ARCAIR                  | BERTSCH            | CHADWICK-HELMUTH       | CSR CONTRAVES         | DUAL-LITE             |
| ABSOLUTE ELECTRONICS  | ARCS                    | BESTOBELL          | CHAMPION               | CSR POWERTRON         | DUALL                 |
| AC-DC ELECTRONICS     | ARGUS INTERNATIONAL     | BEST POWER         | CHATILLON              | CTC                   | DUFFERS               |
| ACCO                  | ARMEC SYSTEMS           | BETA PRODUCTS      | CHARMILLES             | CTI CORP.             | DUKANE                |
| ACCU-CODER            | AROS                    | BETRON             | CHEMCUT                | CTX                   | DUNHAM-BUSH           |
| ACCRAPLY              | ARPECO                  | BETTCHER           | CHEMTRON               | CUMMINS ENGINE        | DUPLO                 |
| ACCURITE              | ART                     | BIDDLE             | CHEOPS                 | CUNO                  | DUPONT                |
| ACCURACY              | ASC                     | BIELOMATIK         | CHEROKEE INT.          | CURTIS PMC            | DURAG                 |
| ACCURATE METERING     | ASCO                    | BIF                | CHERRY                 | CUTLER-HAMMER         | DURANT                |
| ACCU-SORT             | ASEA                    | BIKOR              | CHESHIRE               | CVA                   | DWYER                 |
| ACUTRON               | ASHE CONTROLS           | BILLE-HOWELL       | CHICAGO                | CYBELEC               | DYNAGE                |
| ACME ELECTRIC         | ASHTRONICS              | BINDER             | CHROMALOX              | CYBEREX               | DYNALCO               |
| ACOPIAN               | ASI                     | BINDICATOR         | CI                     | CYBER-RESEARCH        | DYNAMATIC             |
| ACRISON               | ASIAN MICRO SOURCES     | BINGO ELECTRONICS  | CINCINNATI MILACRON    | CYCLOMATIC            | DYNAMICS RESEARCH     |
| ACROM                 | ASI-KEYSTONE            | BINKS              | CINCINNATI INC.        | CYKLOP                | DYNAMOTE              |
| ACROMAG               | ASPO ELECTRONICS        | BK PRECISION       | CINCINNATI TIME        | CZ ELLETTRONICA       | DYNAPAR               |
| AC TECHNOLOGY         | ASR SERVOTRON           | BLACK CLAWSON      | CINTEX                 |                       | DYNAPATH SYSTEMS      |
| ACTEK                 | AUTOMARK MARKING        | BLUEN-CAL          | CITE                   |                       | DYNAPATH SYSTEMS      |
| ACTION INSTRUMENTS    | ASTRON                  | BLEULER MILL       | CLARK                  |                       | DYNAPRO               |
| ACTRONIC              | ASTRO SYSTEMS           | BLH ELECTRONICS    | CLEAR BLUE ENGINEERING |                       | DYNISCO               |
| ACUREX                | ATC                     | BLONDER-TONGUE     | CLEVELAND KIDDER       | D-LINK                |                       |
| ADAC                  | ATHENA CONTROLS         | BLUE M             | CLEVELAND MACHINE      | D.E. SYSTEMS          |                       |
| ADATEK                | ATKINSON DYNAMICS       | BMB                | CONTROLS               | D&K                   |                       |
| ADDMASTER             | ATLAS COPCO             | BMB ELECTRONICA    | CLEVELAND MOTION       | DBL ENGINEERING       |                       |
| ADE CORP.             | ATRO                    | BOBST              | CONTROLS               | DAC                   |                       |
| ADEMCO                | ATRON AUTOMATION        | BODINE             | CLINTON INDUSTRIES     | DA-TECH               |                       |
| ADEPT                 | AUTOCON INDUSTRIES      | BOGEN              | CLINTON POWER          | DAHL                  |                       |
| ADCO                  | AUTOMARK MARKING        | BOLDNER            | CLIPPER                | DAHLGREN              |                       |
| ADTECH                | AUDIOTRONICS            | BONITRON           | CM                     | DALLAS                |                       |
| ADVANCE               | AURORA PUMP             | BOOTH              | COEN                   | DAMP                  |                       |
| ADVANCED MOTION       | AUSCO                   | BORG WARNER        | COIL TECHNOLOGY        | DANAHER MOTION        |                       |
| CONTROLS              | AUTOCON                 | BOSCH              | COLE-PARMER            | DANELEC               |                       |
| ADVANCE INDUSTRIES    | AUTOMATED PACKAGING     | BOSCHERT           | COLORTRONIC            | DANFOSS               |                       |
| ADVANTAGE ELECTRONICS | AUTOMATIC CONTROL       | BOSTON GEAR        | COLT                   | DARRAH ELECTRIC       |                       |
| AEC                   | SYSTEM                  | BOURG              | COLUMBIA MACHINE       | DART CONTROLS         |                       |
| AEG                   | AUTOMATIC TIMING        | BOWE               | CO MANUFACTURING       | DATA GENERAL          |                       |
| AEI                   | CONTROLS                | BOY                | COMBUSTION             | DATA INSTRUMENTS      |                       |
| AEMC INSTRUMENTS      | AUTOMATION DEVICES      | BRANDT             | ENGINEERING            | DATALOGIC             |                       |
| AEROTECH              | AUTOMOTIVE LIFTS        | BRANSON            | COM DAT ELECTRONIC     | DATAMEGA              |                       |
| AGASTAT               | AUTOTECH                | BRIDGEPORT         | COMITALE NATIONAL      | DATAMETRICS           |                       |
| AGATHON               | AUTOTRON                | BRISTOL BABCOCK    | COMPOUND               | DATAPOWER             |                       |
| AGFA                  | AVERY DENNISON          | BRONCO II          | COMPOWER               | DATA PRECISION        |                       |
| AIRCO                 | AVERY LABEL             | BROOKS INSTRUMENTS | COMPTRON               | DATA PRODUCTS         |                       |
| AIRPAX                | AVEX ELECTRONICS        | BROTHER            | COMPUPULL              | DATA RAY              |                       |
| AIRPEINT SYSTEMS      | AVIS                    | BROWN BOVERI       | COMPUGRAPHICS          | DATA TECHNOLOGY       |                       |
| AKK                   | AVTEK                   | BROWNING           | COMPU MOTOR            | DATATEL               |                       |
| AKRON STANDARD        | AVTRON                  | BRUNER             | COMPUTER BOARDS        | DAYTON                |                       |
| ALEXEFF-SNYDER        | AXOR                    | BRYNLAW PRODUCTS   | COMPUTER CONVERSIONS   | DAYTRONIC             |                       |
| ALIMAC                | AXIUM                   | BURTON             | COMPUTER DYNAMICS      | DCE                   |                       |
| ALLEGHANY TECHNOLOGY  | AYDIN                   | BTC                | COMPUTER IDENTICS      | DEC                   |                       |
| ALLEN BRADLEY         | AZIO                    | BTEC               | COMPUTERIZED CUTTERS   | DECTEC                |                       |
| ALLEN DATAGRAPH       | AZO                     | BUELL ENVIROTECH   | COMPUTER POWER         | DEECO                 |                       |
| ALLEN MACHINERY       | AZTECH                  | BUHRS ZAANDAM      | COMPUTER PRODUCTS      | DEITZ                 |                       |
| ALL FILL              |                         | BURFORD            | COMPUTER WISE          | DELAVAN               |                       |
| ALLIS CHALMERS        |                         | BURLE              | COMPUTERIZED CUTTERS   | DELCO PRODUCTS        |                       |
| ALNOR                 | <b>B</b>                | BURR BROWN         | COMPUTRON              | DELTA ELECTRONICS     |                       |
| ALPHA POWER           | B&B MOTOR CONTROLS      | BURROCK            | COMSTAR                | DELTA SCIENTIFIC      |                       |
| ALPINE ELECTRONICS    | B&K                     | BURTON             | COMSTRON               | DELTEC                |                       |
| ALTEC                 | B&K                     | BURTON             | CONTROL                | DELTECH ENGINEERING   |                       |
| ALTEC LANSING         | B&K                     | BURTON             | CONAIR                 | DELTRON               |                       |
| ALTECH                | B&K                     | BURTON             | CONCORD DEVICES        | DEMAG-BARRETT         |                       |
| ALTEK                 | B&K                     | BURTON             | CONDEC                 | DEMICO                |                       |
| ALTIENG               | B&K                     | BURTON             | CONDOR                 | DENVER INSTRUMENT     |                       |
| ALTRONIX              | B&K                     | BURTON             | CONLOG                 | DESPATCH              |                       |
| AMBI-TECH             | B&K                     | BURTON             | CONRAC                 | DET-TRONICS           |                       |
| AMCO                  | B&K                     | BURTON             | CONSOLIDATED           | DETECTO               |                       |
| AMERICAN AUTOGARD     | B&K                     | BURTON             | CONSPEC                | DETECTOR SYSTEMS      |                       |
| AMERICAN BALER        | B&K                     | BURTON             | CONTINENTAL CAN        | DEUTRONIC             |                       |
| AMERICAN INDUSTRIAL   | B&K                     | BURTON             | CONTINENTAL WHITECAP   | DEVAR                 |                       |
| AMERICAN HV TEST      | B&K                     | BURTON             | CONTRAVES              | DIAGRAPH CORPORATION  |                       |
| SYSTEMS               | B&K                     | BURTON             | CONTRAX                | DIAMOND ELECTRONICS   |                       |
| AMERICAN LAUNDRY      | B&K                     | BURTON             | CONTRAX                | DIAMOND POWER         |                       |
| AMERICAN MAGNETICS    | B&K                     | BURTON             | CONTROL-0-MOTION       | DICKINSON             |                       |
| AMERICAN POWER        | B&K                     | BURTON             | CONTROL CHIEF          | DIDDE                 |                       |
| AMERICAN PRECISION    | B&K                     | BURTON             | CONTROL CONCEPTS       | DIECK ELECTRONIK      |                       |
| AMETEK                | B&K                     | BURTON             | CONTROL DATA           | DIELD                 |                       |
| AMF                   | B&K                     | BURTON             | CONTROL ELECTRONICS    | DIETZGEN              |                       |
| AMGRAPH               | B&K                     | BURTON             | CONTROL INSTRUMENTS    | DIGI-CHEK             |                       |
| AM GRAPHICS           | B&K                     | BURTON             | CONTROLLED POWER       | DIGICO                |                       |
| AM LOCK & CO          | B&K                     | BURTON             | CONTROL LOGIC          | DIGIPLAN              |                       |
| AMICON                | B&K                     | BURTON             | CONTROL SYSTEMS IND    | DIGITAL               |                       |
| AMK                   | B&K                     | BURTON             | CONTROL TECHNIQUES     | DIGITAL CONTROL       |                       |
| AMPROBE               | B&K                     | BURTON             | CONTROL TECHNOLOGY     | SYSTEMS               |                       |
| AMRON                 | B&K                     | BURTON             | CONVERTER CONCEPTS     | DIGITAL ELECTRONICS   |                       |
| AMS CONTROLS          | B&K                     | BURTON             | CONVEYOR COMPONENTS    | DIGITAL EQUIPMENT     |                       |
| AMSCO                 | B&K                     | BURTON             | COPAL                  | DIGITAL SYSTEMS       |                       |
| AMTRON                | B&K                     | BURTON             | COPAR                  | DIGITAL TECHNIQUES    |                       |
| ANADIX                | B&K                     | BURTON             | COPEX VULCAN           | DIGITEC               |                       |
| ANAEHM AUTOMATION     | B&K                     | BURTON             | CORIANI-SITEK          | DIGITRONIC            |                       |
| ANALOG                | B&K                     | BURTON             | CORNELL-DUBILE         | DIMENSIONS UNLIMITED  |                       |
| ANALOGIC              | B&K                     | BURTON             | CORNING                | DINEMA                |                       |
| ANCI                  | B&K                     | BURTON             | COSEL                  | DISA                  |                       |
|                       | B&K                     | BURTON             | COTE COMPONENTS        | DISC INSTRUMENTS      |                       |
|                       | B&K                     | BURTON             | COTTRELL               |                       |                       |



1.877.249.1701



www.gesrepair.com



quotes@gesrepair.com



EMERCON INDUSTRIES  
EMERSON  
EMERSON ECLIPSE  
EMI  
EMON  
EMPIRE GENERATOR  
EMS  
EMTROL  
ENCODER ELECTRONICS  
ENCODER PRODUCTS CO.  
ENCORE  
ENDEVCO  
ENDRESS & HAUSER  
ENKEL  
ENTERR  
ENTERTRON  
ENTRON  
ENVIROTECH  
ENVIRO TEC  
EPC TECHNOLOGIES  
EPIC PRODUCTS INTL  
EPOTEC  
EPSON  
ERHARDT LEIMER  
ERICO  
ERICSSON  
ERIZ MAGNETICS  
ERNI  
ERO ELECTRONIC  
ESAB  
ESCI  
ESI  
ESKOFO  
ESM  
ESPRIT SYSTEM  
ESS  
ESSEX ENGINEERING  
ESTERLINE ANGIUS  
ETAMIC  
ETHYL CORP.  
ETI  
ETTA UMIG BACHMANN  
EURODRIVE  
EUROTHERM  
EUTECH INSTRUMENTS  
EV CONTROLS  
EX-CELL-O  
EXIDE  
EXITER  
EXTECH  
EXTRON  
EXXIS  
EYGO

**F**  
F W BELL  
FABER  
FACTS ENGINEERING  
FADAL ENGINEERING  
FAE  
FAGOR  
FAIRBANKS SCALE  
FAIRCHILD  
FAIRCHILD WESTON  
FAIRMONT RAILWAY  
FANON  
FANUC  
FARNELL  
FARRAND  
FARREL  
FASCO  
FASE  
FASSON  
FAST HEAT  
FAST INC.  
FECKEN-KIRFEL  
FEDERAL PIONEER  
FEDERAL SIGNAL  
FEINECHANIK  
FELLTRON  
FEMCO  
FENNER  
FENWAL  
FESTO  
FIBER OPTIONS  
FIFE  
FILTRON  
FINCOR  
FIRE CONTROL INST.  
FIRE-LITE  
FIRING CIRCUITS  
FISCHER & PORTER  
FISHER CONTROLS  
FISHER SCIENTIFIC  
FLASH TECHNOLOGY  
FLEX-KLEEN  
FLEX WEGH  
FLIGHT SYSTEMS  
FLO COMPONENTS  
FLOWDATA  
FL SMITH  
FLUID COMPONENTS  
FLUKE  
FM  
FMC  
FOREDOM  
FORET SYSTEMS  
FORNEY  
FORRY  
FORTRESS  
FOXBORO  
FOXBORO-JORDON  
FRABA  
FRANKLIN  
FREEDOM  
FRICK  
FRITZ KUBLER  
FRONTIER  
FUJI ELECTRIC  
FUJITSU  
FUTURMILL  
FYG

**G**  
G&L ELECTRONICS

GAI-TRONICS  
GALT  
GAMMA  
GAMMA ELECTROTECHNIK  
GAMMAFLUX  
GARDNER DENVER  
GARDUC  
GAST  
GASTECH  
GE ENVIRONMENTAL  
GE FANUC  
GEARING&WATSON  
GEC  
GECO  
GEFRAN  
GEMCO  
GENELCO LEVEL CONTROLS  
GENERAC  
GENERAL AUTOMATION  
GENERAL CONTROLS  
GENERAL DIGITAL  
GENERAL ELECTRIC  
GENERAL MONITORS  
GENERAL RADIO  
GENICOM  
GENIE  
GENIUM POWER CONTROLS  
GENRAD  
GENTRAN  
GEPURFT  
GERRAD  
GETTYS  
GETZMOE  
GFC HAMMOND  
GFC POWER  
GFM  
GIST  
GI  
GIDDINGS & LEWIS  
GILBARCO  
GLASS EQUIPMENT  
GLENTEK  
GLI INTERNATIONAL  
GLOBAL  
GLUNZ & JENSEN  
GOLJIO  
GOLD BOSS  
GOLD CITY  
GOLDSTAR  
GOODMAN  
GORDON  
GORDON ENGINEERING  
GORING-KERR  
GORMAN RUPP  
GOSS  
GOSSEN  
GOULD-MODICON  
GPE CONTROLS  
GRACO  
GRAHAM  
GRAPHIC ELEC.  
GRAPHIC MICROSYSTEMS  
GRASEBY CONTROLS  
GRASEBY GORING KERR  
GREAT LAKES  
INSTRUMENTS  
GRECON  
GREMSER  
GRETAG  
GROSCHOPP  
GROVE  
GSI  
GULTON

**H**  
H.B. REGISTRATION  
H. BLOCHFELDT  
H.P.S.  
HAAKE  
HAAS  
HACH  
HACOMA  
HAENEL  
HAGAN  
HAGGLUNDS DENISON  
HALLIBURTON  
HALL PROCESSING  
SYSTEM  
HALMAR  
HALTEC  
HAMEG  
HAMILTON STANDARD  
HAMMOND  
HAMPTON PRODUCTS  
HANDTMANN  
HANKISON  
HANS HENNING  
HANTSCHO  
HARDINGE BROS.  
HARIG  
HARMAN ELECTRONIC  
HARMER SIMMONS  
HAROWE SERVO CONT.  
HARREL  
HARRIS  
HARTING-HEIDELBERG  
HARTMAN&BRAUN  
HATHAWAY INSTRUMENTS  
HAUCK  
HAUSER  
HAVENS  
HAYS REPUBLIC  
HAYSSEN  
HBO INSTRUMENT  
HC POWER  
HDR  
HEAD MACHINE  
HEALY RUFF  
HEATH  
HEATHWAY  
HEIDELBERG  
HEIDENHAIN  
HELDT ROSSI  
HELM INSTRUMENT  
HENGSTLER

HENRICI  
HERION  
HERMLE LABOR TECHNIK  
HERTNER  
HERTNER  
HES INC.  
HEWLETT PACKARD  
HEYNAU  
HIBOK  
HI-SPEED  
HINGER  
HINSEN  
HIOKI  
HIPTRONICS  
HI SPEED  
HITACHI  
HITE  
HITRAN  
HLJ  
HOBART  
HOFMAN  
HONHER  
HONEYWELL  
HORNER  
HORTON AUTOMATIC  
HOWE RICHARDSON  
HPP  
HS ELECTRONICS  
HUBBELL  
HUBNER  
HUNTER LAB  
HURCO  
HURLETRON  
HUSKY  
HUTCHINSON  
HYDE PARK  
HYDROJUP  
HYDROMATIC PUMP  
HYER INDUSTRIAL  
HYPER-LOOP  
HYUNDAI  
HVJ  
HYDE PARK  
HYSTER

**I**  
I.A.G. ELETTRONICA  
I.B.M.  
I.M.  
I.M.C.  
I.S.C.  
IBO  
ICE  
ICC INSTRUMENT  
ICE-O-MATIC  
ICORE  
ICSI  
IDC  
IDEAL INDUSTRIES  
IDEC  
IDLER  
IEE  
IHARA  
ILEX  
IMC INSTRUMENTS  
IMPACT SYSTEMS  
INCOE  
INCOE  
INDEL  
INDEX-WERKE  
INDRAMAT  
INDUCTOHEAT  
INDUCTOTHERM  
INDUSTRIAL CONTROL  
EQUIP  
INDUSTRIAL DEVICES  
INDUSTRIAL DRIVES  
INDUSTRIAL DYNAMICS  
INDUSTRIAL INDEXING  
INDUSTRIAL MAGNETICS  
INDUSTRIAL SENSORS  
INDUSTRIAL TIMER  
INDUSTRIES AUTOMATION  
INELCO  
INFASE  
INFEED  
INFRA PAK  
INGERSOLL-RAND  
INLAND MOTOR  
INNERLOGIC  
INNOVATION INDUSTRY  
INSPECTOR, THE  
INSTRON  
INSTRULAB  
INSTRUMENTS, INC.  
INTECK  
INTECOLOR  
INTEL  
INTELLEC  
INTER CONTROL  
INTERLAKE  
INTERLOGIC  
INTERMEC  
INTERNATIONAL POWER  
INTERMIL  
INTERSTATE  
INTROL  
INVALC  
ION SYSTEMS  
IPAC  
IPC AUTOMATION  
IRCON  
IRD MECHANALYSIS  
ISB  
ISHIDA  
ISL  
INNOVATION INDUSTRY  
INSTRON  
INSTRULAB  
INSTRUMENTS, INC.  
INTECK  
INTECOLOR  
INTEL  
INTELLEC  
INTERLAKE

INTERMEC  
INTERNATIONAL  
INTERNATIONAL  
INTERMIL  
INTERSTATE  
INTRLO  
INVALC  
IPAC  
IRCON  
IRD MECHANALYSIS  
ISB  
ISHIDA  
ISL  
ISSC  
ITALSEA SRL SISTEMI  
ITE IMPERIAL  
ITEK  
ITT  
IVO  
IWATSU

**J**  
JACGUAR  
JAMES HUNTER  
JANDY INDUSTRIES  
JARVIS  
J.B. WEBB CO.  
JEFFREY  
JENSEN  
JERROLD  
JETLINE ENGINEERING  
JET ROLL  
JEWELL  
JMR ELECTRONICS  
JOB  
JOHN DEERE  
JOHNSON CONTROLS  
JOLIET EQUIPMENT  
JONES INSTRUMENT  
JORDAN CONTROLS  
JOSEF MARTIN  
JOST  
JOYAL  
JUMO  
JUNGHEINRICH  
JUNGMICHEL  
JURA ELEKTRONIK  
**K**  
KA  
K-TRON  
K&S SYSTEMS  
KALATEL ENGINEERING  
KALEX  
KANNIEGESSER  
KAR  
KARDGARD  
KARL-KISTER  
KATO ENGINEERING  
KAWASAKI  
KAY RAY  
KAYE  
KB ELECTRONICS  
KEANE MONRO  
KEARNEY & TRECKER  
KEB CONNIBERT  
KEITHLEY  
KELLE  
KELTRON  
KENDRO LAB PRODUCTS  
KENT  
KENWAY  
KENWOOD  
KEP  
KEPCO  
KEYTRONIC  
KIDDE  
KING YEAR  
KINGSPAO  
KIRBY-LESTER  
KITSLER-MORSE  
KITAMURA  
KLAASING ELECTRONICS  
KLAXON SIGNALS  
KLK/OK  
KLOCKNER-BARTEL  
KLOCKNER MOELLER  
KME  
KNIGHT EQUIPMENT  
KODAK  
KOHLER  
KOHNE ACHIM BREMEN  
KOLB  
KOLBUS  
KOLLMORGEN  
KOMATSU  
KOMEK  
KOMORI  
KONA  
KONE  
KONICA  
KOPPERS  
KOREA DATA SYSTEMS  
KOYO ELECTRONICS  
KP  
KRAFT  
KRATOS  
KRELLI  
KRISTEL CORPORATION  
KRONES  
KTK  
KUHNE  
KUKLA  
KUNZE ELECTRONIC  
KURODA  
KURZ INSTRUMENTS  
KW BATTERY CO.  
KYOSAN  
KYOTO DENKI  
KYTRONICS  
**L**  
L-TEC  
LABEL-AIRE

LABELLE  
LABOD ELECTRONICS  
LABTEST EQUIPMENT  
LAMB PASABAN  
LAMBDA  
LANCER  
LANDIS  
LANGSTON  
LANHAM  
LANGSING  
LANTECH  
LAPOHN  
LASCAR  
LASER INDUSTRIES  
LAWATEC  
LAWSON  
LCI  
LEADER  
LEAR-SIEGLER  
LECO  
LEEDS & NORTHRUP  
LEESON  
LEESONA  
LEGEND SERIES  
LEINE & LINDE  
LEMO  
LENZE  
LEONARD + BAUER  
LEOPOLD  
LEPEL  
LEROI  
LEROY SOMER  
LEUZE ELECTRONIC  
LEWIS  
LEYBOLD HERAEUS  
LFE  
LH RESEARCH  
LIBERTY  
LIBRA  
LIBBERT  
LIFE TECHNOLOGIES  
LIFT MASTER  
LIMITORQUE  
LINCO  
LINCOLN  
LINDBERG  
LINDLY  
LINEAR  
LINK  
LIQUID CONTROLS  
LION CONTROLS  
LITTON  
LL LITTLE  
LOAD CONTROLS  
LOCKWOOD  
LODGE COTTRELL  
LODGETRONICS  
LOGIC SYSTEMS  
LOMA  
LONGFORD ELECTRONIC  
LORAIN  
LORD LABEL SYSTEMS  
LORTEC  
LOUIS ALLIS  
LOVATO  
LOVE CONTROLS  
LOVEJOY  
LOVESHAW  
LOYOLA  
LSI  
LS SEITE  
LTN SERVOTECHNIK  
LUCA  
LUCHT  
LUMENTE  
LUNDELL  
LUST  
LUTRON  
LUTZE  
LYMCO ELECTRONICS

**M**  
M.E.G.  
M&C  
M&H  
MAC  
MACBETH  
MACHINE CONTROL INC.  
MACTRON  
MADISON  
MAGITRONIC  
MAGNA  
MAGNACRAFT  
MAGNAFLUX  
MAGNAVOX  
MAGNE  
MAGNETEC POWER  
MAGNETEK  
MAGNETIC POWER  
SYSTEMS  
MAGNETROL  
MAGPOWER  
MAG TECHNOLOGY  
MAHLO  
MAILLEFER  
MAISE  
MAJESTIC JORDON  
MALOJA  
MANIA  
MANN-RUSSELL  
MANNESMANN DEMAG  
MAN ROLAND  
MARATHON  
MARKEM  
MARKON  
MARNNING  
MARPOSS  
MARQUETTE  
MARQUIE  
MARS  
MARSH  
MARSHALL ELEC.  
MARTEL  
MARTIN  
MASSTRON

MATER BURT  
MATRIX  
MATROX  
MATSUJRA  
MATSUSHITA  
MATTHEWS  
MATTHE  
MAX DATWYLER  
MAXON  
MAYTAG  
MAZAK  
MBO  
MCC  
MCCAIN MANUFACTURING  
MC CLEERY  
MCGILL  
MC GRAW EDISON  
MCQUAY  
MCS  
MEASUREMENT SYSTEMS  
MEASUREX  
MECHANICAL SPECIALTIES  
MECHATRON  
MECHTRONICS  
MEDAR  
MEDATA BESTOBELL  
MEGER INSTRUMENTS  
MEIKI  
MELSEC  
MEMCO  
MENDES  
MERIAM INSTRUMENT  
MERCER  
MERLIN GERIN  
MERRICK  
METALCHEK  
METCO  
METRAMATIC  
MGE UPS SYSTEMS  
MGV  
MIBUDENKI  
MICROFLOC PRODUCTS  
MICRO MOTION  
MICROPUL  
MICROSCAN  
MICROSWITCH  
MICROTEC  
MICROTREL  
MIDWEST TIME CONTROL  
MIHARA MACHINERY  
MIKI PULLEY  
MIKONTROL  
MIKRO-PUL  
MILL EQUIPMENT  
MILLER  
MILLTRONICS  
MILTON ROY  
MILWAUKEE  
MINARIK  
MINIM  
MINSTER  
MIRTONE  
MITCHELL INSTRUMENTS  
MITSUBISHI  
MK PRODUCTS  
MKS INSTRUMENTS  
MMATS  
MOBLOGIC  
MOCCON  
MODERN POWER  
MODICON  
MODDADATA SYSTEMS  
MOISTURE REGISTER  
PRODUCTS  
MOISTURE SYSTEMS  
MOKON  
MOLLYSCAN  
MONARCH  
MONITRONIX  
MONSANTO  
MONSUN-TISON  
MONTECH  
MONTWILL&SCHAFER  
MOORE INDUSTRIES  
MOORE PRODUCTS  
MORI SEIKI  
MORRISON  
MORSE  
MORVUE  
MOSA  
MOTCH  
MOTION CONTROL  
MOTION PRODUCTS  
MOTOR APPLIANCE  
MOTOROLA  
MOTORTRONICS  
MPS  
MSA  
MSC  
MSI CORP.  
MTS  
MUELLER  
MULLER  
MILLER MARTINI  
MULTICOM  
MULTI MEDIA  
MULTIVAC  
MULTI VOLT  
MURATA  
MURR ELEKTRONIK  
MUUNTSOAHKO  
**N**  
N.A.P.  
NAC  
NALCO  
NAMCO  
NAPCO  
NASSAU  
NATIONAL CONTROLS  
CORP  
NATIONAL ENGINEERING



1.877.249.1701

www.gesrepair.com

sales@gesrepair.com

NATIONAL INDUSTRIES  
NATIONAL  
SEMICONDUCTOR  
NATIONAL SONICS  
NAUTICAL STRUCTURES  
NCC  
NCI  
NCR  
NEC  
NEDAP  
NEELTRAN  
NELCO  
NELSON  
NEMATRON  
NEMIC LAMBDA  
NEPTUNE  
NES  
NEUNDOGER  
NEWAGE INTERNATIONAL  
NEW HERMES  
NEWMACK  
NEWPORT  
NEW RIVERS  
NIGATA RUBICON  
NIKKI DENSO  
NIKON  
NIPPON ELECTRIC  
NIRECO  
NISSAN  
NISSHINBO  
NITTO  
NITTO KOHKI  
NKM  
NOB ELEKTRONIK  
NOKIA  
NORDAC  
NORDIC  
NORDSON  
NORFIN  
NORTEL  
NORTEK  
NORTH AMERICAN IND.  
NORTH AMERICAN MFG.  
NORTH EAST  
NORTH ELECTRIC  
NOTIFIER  
NOVA  
NOVATECH  
NOVOTRON  
NSC  
NUCLETRON SEA  
NUCON  
NUSONICS

**O**  
OEM CONTROLS  
ODGEN  
OHAUS  
OHIO  
OHMART  
OI CORPORATION  
OILGEAR  
OK ELECTRONICS  
OKAMOTO  
OKIMATA  
OKUMA  
OKUMA  
OLDEN  
OLEC  
OLFX  
OLTRONIX  
OLYMPIC  
OMEGA  
OMNI  
OMRON  
ONAN  
ONO SOKKI  
OPCON  
OPEN DATE  
OPICOM  
OPTIMUM CONTROLS  
OPTO-22  
OPTREX  
ORBITRON  
ORIENTAL MOTOR  
ORIGIN  
ORION  
ORMEC  
ORTEC  
OS WALKER  
OTC  
OTIS  
OVAL  
OXY-DRY  
OYLE

**P**  
P.C.I.  
P-Q CONTROLS  
P.S.R.  
PACE  
PACEPAK  
PACER  
PACIFIC ENGINEERING  
PACIFIC POWER SOURCE  
PACIFIC SCIENTIFIC  
PACKAGE CONTROLS  
PACKAGE MACHINERY  
PACKARD BELL  
PAFRA  
PAK-TRONICS  
PAN-MAG  
PANALARM  
PANALOGIC  
PANASONIC  
PANDUIT  
PARAGON  
PARAMETRICS  
PARKER  
PARKER HANN  
PARSONS  
PARTLOW  
PASABAN  
PASAR  
PATTON

PAYNE ENGINEERING  
PC CONTROLS  
PDI  
PECO  
PEGASUS  
PELCO  
PELLERIN MILNOR  
PENNSYLVANIA SCALE  
PENTEK  
PENWALL  
PEPPER & FUCHS  
PERKIN ELMER  
PERMA DRIVE  
PETRO VEND  
PH  
PHASERONICS  
PHILIPS ELECTRIC INST.  
PHILLIPS  
PHOENIX CONTACT  
PHOTOMATION  
PHOTOSWITCH  
PICO  
PILLAR TECHNOLOGIES  
PILZ  
PIONEER MAGNETICS  
PLANETA  
PLAMMECA  
PLC DIRECT  
PLEMING  
PM CORP  
PMI  
POINT  
POLAR  
POLYDYNE  
POLYSCIENCE  
POLYSPEDE  
POOLE LTD  
POTRANS  
POTTER & BRUMFIELD  
POWCON  
POWERBOX  
POWER CIRCUITS  
POWER CONTROL SYSTEM  
POWER ELECTRONICS  
POWER GENERAL  
POWER MATE  
POWER MATION  
POWERNET  
POWER ONE  
POWER PAC  
POWER SOURCE  
POWER SWITCH  
POWERTEC  
PQ CONTROLS  
PRATT  
PRATT&WHITNEY  
PRECISION INDUSTRIES  
PRECISION SCIENTIFIC  
PRESS SPEED  
PRESTEK  
PRINCETON  
PRINCO  
PRINT  
PRINTRONIX  
PRISM  
PRO-LOG  
PROCESS CONTROL  
SYSTEMS  
PROCESS INSTRUMENTS  
PROFOLD  
PROGRESSIVE  
ELECTRONICS  
PROMAC  
PROMINENT FLUID  
CONTROLS  
PROTECTION CONTROLS  
PROTEK  
PRO VIDEO  
PSC  
PSI  
PTI  
PULS  
PULSE STAR  
PURRCO  
PYROTRONICS

**Q**  
QSI  
QUAD TECH  
QUALIDYNE SYSTEMS  
QUALITY POWER SYSTEM  
QUANTEM  
QUANTEX  
QUARTTECH  
QUINTON

**R**  
R-TEC  
RACHIVAL  
RAM  
RAMCO  
RAMSEY CONTROLS  
RANDTRONICS  
RANSBURG  
RAPID ELECTRIC  
RAPID PRINT  
RAPID DATA  
RAPID POWER  
RATELCO  
RAYCON  
RAYMOND  
RAYTEK  
RAYTEON  
RAYTRON  
RCA  
RDI  
RED DEVIL  
RED LION CONTROLS  
REFLEX  
REFU ELECTRONIK  
REGATRON  
REGENT  
RELCON  
RELJANCE  
RELTEC

REMX  
RENCO  
RENOLD  
REPUBLIC  
RESEARCH-COTTRELL  
RESEARCH  
REULAND  
REXHAM  
REXNORD  
REXROTH  
RH TECHNICAL  
RICE LAKE  
RICHARDSON  
RICHMOND STATIC  
CONTROL  
RICHQ  
RII  
RIKEN  
RIMROCK  
RIS  
RITE HITE  
RITTER  
RKC  
ROBBINS&MYERS  
ROBERTSHAW  
ROBICON  
ROBINAR  
ROBITRON  
ROCHESTER INSTRUMENTS  
ROCKFORD DYNAMORQUE  
ROCKWELL  
ROCKWELL GOSS  
ROLAND-LEUZE  
ROLFES  
RONAN  
ROSBACHER  
ROSEMOUNT  
ROSENTHAL  
ROSSMANITH  
ROTASWITCH  
ROWAN ELECTRONICA  
ROWE  
RTE-DELTEC  
RYCO  
RYOBI

**S**  
S.C.E. ELETTRONICA  
S.J. CONTROLS  
S&B CONTROLS  
S&J CONTROLS  
S&S ELECTRONIC  
SABER ELECTRONICS  
SABINA  
SACO  
SAF  
SAF DRIVE SYSTEMS  
SAFTRONICS  
SALEM  
SALVAGNINI  
SAM DICK INDUSTRIES  
SAMSUNG  
SAMTEC  
SANEI  
SANKI  
SANKYO  
SANYO  
SANYO DENKI  
SAPAL  
SARASOTA  
SARNELL  
SATEC  
SAUER-SUNDSTRAND  
SBC  
SCAMA  
SECO  
SCHAUFL  
SCHENCK  
SCHEWITZ  
SCHENCK  
SCHIELE  
SCHLEICHER  
SCHMERSAL  
SCHNEIDER AUTOMATION  
SCHNEIDER-WERK  
SCHRIEBER  
SCHROFF  
SCHULTZ  
SCI  
SCIENTIFIC COLUMBUS  
SCIENTIFIC TECHNOLOGIES  
SCOA SYSTEMS  
SCOPE, INC.  
SCREEN  
SEA  
SEAGATE  
SECO  
SECURITRON  
SECURITY ELECTRONICS  
SEIBERCO  
SEIDEL  
SEIKI  
SELCON  
SELEMA  
SELIN  
SEMICONDUCTOR CIRCUITS  
SENCON  
SENECA ENVIRONMENTAL  
SENKING  
SENSALL  
SENTEX  
SENTROL  
SENTRY-LITE  
SEPCO  
SEQUENTIAL  
SERVO DYNAMICS  
SERVO PRODUCTS  
SERVOSTARKER  
SEW-EURODRIVE  
SEW MATICS  
SEYPA  
SHANKYO-SHARP  
SHARCO ELEKTRONIK  
SHARP  
SHEFFIELD MEASUREMENT  
SHIH CHANG

SHIMADEN  
SHIMA SEIKI  
SHIMPO  
SHINDENGEN  
SHINKO  
SICK  
SIE FORNEY  
SIEGER  
SIEMENS  
SIENKO  
SIERRA INSTRUMENTS  
SIERRA POWER  
SIGMA  
SIGNAL CRAFTERS  
SIGNALJOY  
SIGNET SCIENTIFIC  
SIGNODE  
SIKO  
SIMA  
SIMON  
SIMPLEX  
SIMPSON  
SINGER  
SINGER KEARFOTT  
SIPOS ZURICH  
SKYNET ELECTRONIC  
SLAUGHTER  
SLAUTTERBACK  
SLICKER  
SLO SYN  
SMC  
SOCAPEL  
SOLA  
SOLAR  
SOLITECH  
SOLUNA PRINTING  
MACHINERY  
SOLTEC  
SONATRON  
SONICOR  
SONIEL  
SONY  
SORENSEN  
SORTEK  
SOUNDRONIC  
SOURCE  
SOUTHCOM  
SOUTHCON  
SOUTHWESTERN BATTERY  
SPANG  
SPARTANICS  
SPECTRUM CONTROLS  
SPEEDY DIE  
SPRINT ELECTRIC  
SQUARE D  
SS PROPORTIONING  
SSD  
SEAGATE  
SECO  
SECURITRON  
SECURITY ELECTRONICS  
SEIBERCO  
SEIDEL  
SEIKI  
SELCON  
SELEMA  
SELIN  
SEMICONDUCTOR  
CIRCUITS  
SENCON  
SENECA ENVIRONMENTAL  
SENKING  
SENSALL  
SENTEX  
SENTROL  
SENTRY-LITE  
SEPCO  
SEQUENTIAL  
SERVO DYNAMICS  
SERVO PRODUCTS  
SERVOSTARKER  
SEW-EURODRIVE  
SEW MATICS  
SEYPA  
STA HI  
STAHL  
STANLEY  
STEGMAN  
STOCK EQUIPMENT  
STORK  
STRAPEX  
STREAMFEEDER  
STRIKER CHARGERS  
STROMBERG  
STORED ENERGY SYSTEMS  
STRUTHERS DUNN  
STUEJER SPEICHEREINHEIT  
SULZER  
SUMITOMO  
SUMMIT  
SUMTAK  
SUNDSTRAND  
SUPERIOR ELECTRIC  
SUTRON  
SWANSON  
SWED  
SWIT  
SYLVANIA  
SYMAX  
SYNCRFLOW  
SYNCHRO MOTION CORP.  
SYSCON  
SYSTEMATIC CONTROLS  
SYSTROL

**T**  
T.S.D.  
T.S.I.  
TAESUNG  
TAKATORI  
TAMAGAWA  
TAMURA  
TASC  
TATUNG  
TAYLOR

TB WOODS  
TBI  
TDI  
TDK  
TEC  
TECATOR  
TECHNITRON  
TECHNOLOGY INC.  
TECNETICS  
TECO  
TECON  
TEC SYSTEMS  
TECTROL  
TEGAM  
TEI  
TEKEL  
TEKLYNX  
TEKTRONIX  
TELECOLOR  
TELECRANE  
TELEDYNE  
TELEQUIPMENT  
TELEMARK  
TELEMECANIQUE  
TELEMOITIVE  
TELMARK  
TELMATE  
THALHEIM  
THAMES SIDE MAYWOOD  
THAYER  
THERMAL DYNAMICS  
THERMO ELECTRIC  
THERMO ENVIRONMENTAL  
THERMO JARRELL ASH  
THERMOX  
THOMSON  
THING ALBERT  
TIF INSTRUMENTS  
TIME MARK  
TN TECHNOLOGIES  
TOA  
TOBIAS ASSOCIATES  
TODD PRODUCTS  
TOLEDO SCALE  
TONOGVA  
TOPAZ  
TOWARD ELECTRIC  
TOWARD ELECTRIC  
TOROID  
TOSHIBA  
TOTAL CONTROL  
PRODUCTS  
TOTAL CONTROL SYSTEMS  
TOTAL COUNT  
TOTAL POWER  
TOTAL REGISTER  
TOKU ELECTRIC  
TOWER ELECTRONICS  
TOYODEN  
TOYO DENKI  
TPI  
TR ELECTRONIC  
TRABON  
TRACO  
TRANE  
TRANSMATION  
TRIAD CONTROLS  
TRI-MAG  
TRI MEG SYSTEMS  
TRI-TRONICS  
TRIANGLE  
TRINE  
TRION  
TRIPLETT  
TRIPP LITE  
TRISEN SYSTEMS  
TRISEM ELECTRONICS  
TROJAN  
TUNTURI  
TURNBULL  
TUTHILL PUMP GROUP  
TYLER

**U**  
U.S. ELECTRIC  
UDYLITE  
UNICO  
UNIFLOW  
UNILOC  
UNILOG  
UNILUX  
UNIMEASURE  
UNIPO  
UNIPOWER  
UNIPRESS  
UNIQIP  
UNIPOWER  
UNIPRESS  
UNITED ELECTRIC  
UNITROL  
UNIVERSAL  
US ELECTRICAL MOTORS  
USI  
USM CORP  
US MOTORS  
UTICOR  
UTSUKI

**V**  
VAC-U-MAX  
VACUUMATIC  
VAL-TECH  
VALCO  
VALMET  
VALQUIP

VANGUARD  
VAREC  
VARI TECH  
VARTECH  
VASA ENGINEERING  
VCI  
VDS  
VECTOR  
VECTRAN  
VECTROL  
VEE-ARC  
VEEDER-ROOT  
VEMAG  
VENT AIRE  
VENT ELECTRONICS  
VERTA  
VICKERS  
VICON  
VICOR  
VICTOR  
VIDEO JET  
VIKING INDUSTRIES  
VILTER  
VISOLUX  
VITEC  
VIZ  
VOKMANN  
VOLGEN  
VOLLMER  
VORNE INDUSTRIES  
VORTEX PUMP

**W**  
W.E.G.  
WADDINGTON  
WAGENER & GRIMM  
WAHL INSTRUMENTS  
WALCO  
WALKER  
WALLACE&TIERNAN  
WARD  
WARNER & SWASEY  
WARNER ELECTRIC  
WARRICK CONTROL  
WATLOW  
WAUKESHA  
WAVETEK  
WEB GUIDE  
WEB PRINTING  
WEIDMULLER  
WEIGH-TRONIX  
WEIGH-O-MATIC  
WEIGHTEC  
WEIR  
WELDOTRON  
WELDRONICS  
WELLS-GARDNER  
WELTRONIC  
WEMCO  
WENDT  
WER  
WEST INSTRUMENTS  
WESTAMP  
WESTINGHOUSE  
WESTON CONTROLS  
WESTRONICS  
WHEELABRATOR  
WHITE-SUNDSTRAND  
WHITING  
WHITLOCK  
WIDMANN  
WILKERSON INSTRUMENT  
WILLETT SYSTEMS  
WINDSOR  
WINKLER-DUNNEBIER  
WINTRISS  
WIRE ELECTRONIC  
WOERNER  
WOHLNBERG  
WOHRLE  
WOODS  
WOODWARD  
WORCESTER CONTROLS  
WRIGHT  
WST  
WULFTEC  
WYSE

**X**  
XANDER AACHEN  
XCEL CONTROLS  
XENTEK  
XERTEC  
XYCOM  
XYCOM

**Y**  
YALE  
YAMATO  
YASKAWA  
YASNAC CONTROL  
YAWA  
YEMMANS CHICAGO  
YEO TRODE  
YOKOGAWA  
YOKOHAMA  
YORK INTERNATIONAL  
YOUNGONE  
YUASA

**Z**  
ZAMPERLE  
ZANDER AARCHEN  
ZENER  
ZENITH  
ZENITEC  
ZIEGLER  
ZINSER  
ZTRON  
ZWECK ELEKTRONIK  
ZYCRON



1.877.249.1701



www.gesrepair.com



quotes@gesrepair.com



# Global<sup>®</sup>

ELECTRONIC SERVICES INC.

**WE SERVICE & REPAIR ALL  
INDUSTRIAL ELECTRONICS, MOTORS,  
HYDRAULICS & PNEUMATICS**



## Global ADVANTAGES:

- ✓ 18 MONTH IN-SERVICE WARRANTY
- ✓ 1-5 DAY STANDARD TURNAROUND
- ✓ FREE 1-2 DAY RUSH SERVICE
- ✓ FREE EVALUATIONS ON ALL ITEMS
- ✓ 24/7 LIVE CUSTOMER SUPPORT
- ✓ OEM TRAINED & CERTIFIED TECHNICIANS
- ✓ INDUSTRY LEADING TEST EQUIPMENT
- ✓ 10% PRICE GUARANTEE

**[www.gesrepair.com](http://www.gesrepair.com) | 1.877.249.1701**



5325 Palmero Court  
Buford, GA 30518

770.965.9294 | fax 770.965.1314

**Free pick up & delivery in:  
GA | AL | KY | NC | SC | TN**



1010 Pamela Drive  
Eules, TX 76040

817.545.2911 | fax 817.545.2991

**Free pick up & delivery in:  
TX | AR | KS | LA | NM | OK**